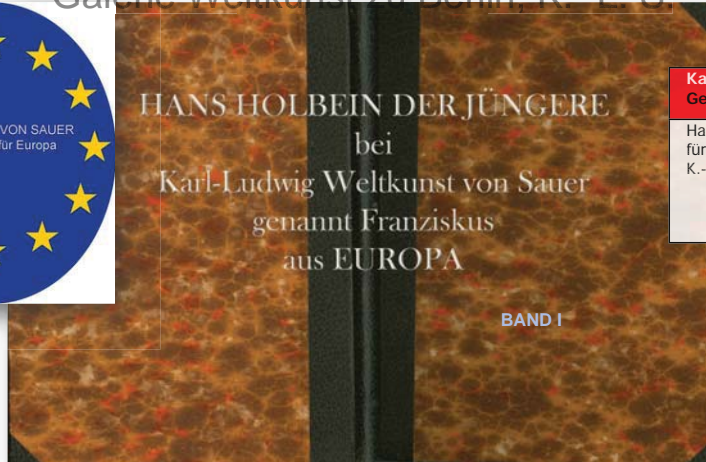


**Weltkunst**

Galerie Weltkunst zu Berlin, K.-L. S.



**Karl-Ludwig Sauer  
Genie**

Hans Holbein der Jüngere ist  
für Überraschungen gut.  
K.-L. S.



Vortrag:  
EUROPA/Perestroika

Ein Dorf an der Grenze ist mehr wert als ein Fürstentum, das sechzig Meilen entfernt liegt. Friedrich der Große, Politische Schriften. 1776

Es sind in EUROPA die Grenzen verschwunden um freien Handel zu treiben und Frieden zu halten. K.-L. S.

Nachsatz: Nur eine gemeinsame Sprache, die Vatersprache ESPERANTO neben den Muttersprachen ist Garant für ein prosperierendes EUROPA.



Galerie Weltkunst zu Berlin, K.- L. S.

HANS HOLBEIN DER JÜNGERE

HANS HOLBEIN DER JÜNGERE  
1493-1531

## Galerie Weltkunst zu Berlin, K.- L. S.



K.-L.  
S.



*D*iese Blätter geben ein Gesamtbild der gewaltigen  
Lebensleistung

### HANS HOLBEIN DES JÜNGEREN

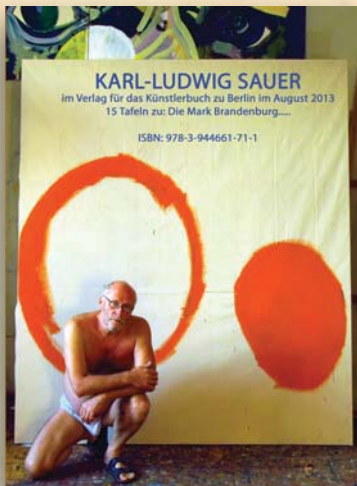
Im Jahre 1509, vor Ausbruch des Krieges, bestand  
die Absicht, die Reproduktionen einem englischen  
Publikum vorzuführen, weil England das Land war,  
von dem, unter der Gunst Heinrich VIII., der Weh-  
ruf Holbeins stieg.

Galerie Weltkunst zu Berlin, K.- L. S.

HANS HOLBEIN  
DER JÜNGERE

ALBERT NAUCK & CO. BERLIN

# Galerie Weltkunst zu Berlin, K.-L. S.



Angsborg, Picture Gallery

Hans Holbein the Elder: Baptism of Paul  
Left wing of triptych: "Baptism of St. Paul"  
ca. 1514

Painted by 1514-15 in  
oil on wood panel  
(of triptych)

# Galerie Weltkunst zu Berlin, K.-L. S.



Hans Holbein the Elder: Portrait of the Artist

1515  
11.11 by 14.11 in.  
28.23 by 35.83 cm.

Hans Holbein the Elder: Portrait of the Artist  
Silverpoint drawing  
1515



Hans Holbein the Elder: Ambrosian and Hans Holbein

1515  
11.11 by 14.11 in.  
28.23 by 35.83 cm.

Hans Holbein the Elder: Ambrosian and Hans Holbein  
Silverpoint drawing  
1515

# Galerie Weltkunst zu Berlin, K.- L. S.



Florence, Uffizi Gallery

12.77 by 8.81 in.  
6.125 by 4.425 in.

Hans Holbein the Younger: Portrait of the Artist  
Coloured chalk drawing, pasted and worked over  
1545-1546

4



Zürich, Schweizerisches Landesmuseum

40.11 by 15.14 in.  
1.62 by 0.59 in.

Painted table-top for Hans Bue  
(Reconstruction)

1515

5

# Galerie Weltkunst zu Berlin, K.- L. S.



A schoolmaster's sign-board  
(Front side)  
1516

Book, Public Art Collection

1516, fol. 154v, no. 1516, fol. 154v, no. 1516, fol. 154v, no.



A schoolmaster's sign-board  
(Back side)  
1516

Book, Public Art Collection

1516, fol. 154v, no. 1516, fol. 154v, no. 1516, fol. 154v, no.



# Galerie Weltkunst zu Berlin, K.- L. S.



Buck, Public Art Collection

Marginal Drawings to "Praise of Folly" of Erasmus of Rotterdam

- a) The obtuse minded scholar b) Folly at the lecturer's desk c) Nicholas of Lyra  
d) Erasmus e) Folly descends from the desk



Paris, Louvre

Hands of Erasmus of Rotterdam

Drawing in chalk and red chalk  
Study for the portrait in Longford Castle

4 cm by 4 cm 16.  
1511 by 1512 16.

# Galerie Weltkunst zu Berlin, K.-L. S.



Longford Castle

29.84 by 21.27 in.  
76.03 by 54.00 cm.

Erasmus of Rotterdam

1522

10



Paris, Louvre

26.42 by 21.48 in.  
67.25 by 54.65 cm.

Erasmus of Rotterdam

1522

11

# Galerie Weltkunst zu Berlin, K.- L. S.



Beide, Public Art Collection

Diameter 5.91 cm.  
Diameter 0.100 m.

Erasmus of Rotterdam  
1469-1536



Erasmus im Gehen

Woodcut  
1515

# Galerie Weltkunst zu Berlin, K.- L. S.



Basel, Public Art Collection

14 1/2 by 11 1/2 in.  
37.5 by 29.2 cm.

Burgomaster Jakob Meyer zum Hagen

1516

14



Basel, Public Art Collection

14 1/2 by 11 1/2 in.  
37.5 by 29.2 cm.

Dorothea Meyer zum Hagen

1516

15

# Galerie Weltkunst zu Berlin, K.- L. S.



New York, Metropolitan Museum

Benedek von Honthausen

1517

15.15 by 11.45 in.  
6.190 by 6.190 cm.



Basel, Public Art Collection

Basilius Amerbach

1519

10.66 by 10.66 in.  
6.878 by 6.878 cm.

17

# Galerie Weltkunst zu Berlin, K.- L. S.



Narrenberg, Germanisches Nationalmuseum

12.44 by 18.51 in.  
31.57 by 46.99 cm.

Johnnes Schuster

110

18



Bask, Public Art Collection

13.58 by 14.47 in.  
34.49 by 36.76 cm.

The ghoulish Paracelsus (I)  
Drawing in black and colored chalk

110

19

# Galerie Weltkunst zu Berlin, K.- L. S.



Buch, Public Art Collection

11.29 by 11.28 in.  
0.795 by 0.451 m

Picture of Holbein's family  
11.29 11.28



Buch, Public Art Collection

11.14 by 11.46 in.  
0.419 by 0.442 m

Portrait of an unknown man  
(said to be Holbein himself)  
Drawing in black and colored chalk, printed over with water-color  
11.14 11.46

# Galerie Weltkunst zu Berlin, K.- L. S.



Berlin, Public Art Collection

15.08 by 10.55 in.  
0.381 by 0.268 m.

Magdalena Offensung im Verste  
1505



Berlin, Public Art Collection

15.06 by 10.45 in.  
0.381 by 0.268 m.

Lute of Corinthe  
1505



# Galerie Weltkunst zu Berlin, K.- L. S.



Biele, Public Art Collection

Christ on Man of Sorrows  
Mary on Mater Dolorosa  
1511/1512

12.85 by 7.59 in.  
32.67 by 19.25 cm.



Berlin, Print Room

Christ on the Cross  
Peter and John  
1519

6.49 by 8.67 in.  
16.48 by 21.97 cm.



Biele, Public Art Collection

Christ in his tomb

12.85 by 19.25 in.  
32.67 by 49.05 cm.

# Galerie Weltkunst zu Berlin, K.- L. S.



Bonn, Public Art Collection

11.81 by 14.18 in.  
0.200 by 0.157 m

Adam and Eve (The Fall)  
1117



Bonn, Public Art Collection

8.97 by 6.35 in.  
0.228 by 0.161 m

St. John  
Ca. 1517

# Galerie Weltkunst zu Berlin, K.- L. S.



Fachburg i. B., Minster, University Chapel

Hg. 17 by 44.11 in.  
L. 17 by 1.68 m.

Oberried Altar

Left wing: Adoration of the shepherds  
ca. 1340

18



Fachburg i. B., Minster, University Chapel

Hg. 17 by 44.11 in.  
L. 17 by 1.68 m.

Oberried Altar

Right wing: Adoration of the Kings  
ca. 1340

19

# Galerie Weltkunst zu Berlin, K.- L. S.



Leipzig, Picture Gallery

7.71 by 5.84 in.  
19.04 by 14.83 cm.

Madonna and Child  
Pen drawing on grey/black paper  
1519

30



Biele, Public Art Collection

15.81 by 14.12 in.  
40.16 by 35.95 cm.

The Holy Family  
Pen drawing on brown-red tinted paper  
ca. 1520

31

# Galerie Weltkunst zu Berlin, K.- L. S.



Dresden, Picture Gallery

Madonna of Burgomaster Jakob Meyer  
Copy, probably by Bartholomäus Harburg  
ca. 1540-1548 (?)

64.75 by 49.13 in.  
1.65 by 1.25 m.



Chemnitz, Castle

Madonna of Burgomaster Jakob Meyer

1540

55.55 by 39.76 in.  
1.42 by 1.01 m.

# Galerie Weltkunst zu Berlin, K.- L. S.



Schilthorn, Museum

55.55 by 59.57 in.  
1.41m by 1.50m m.

Madonna of Schilthorn  
1112



Basil, Public Art Collection

45.07 by 55.62 in.  
1.145 by 1.427 m.

The Last Supper  
(Fragment)  
ca. 1500/1511

# Galerie Weltkunst zu Berlin, K.- L. S.



Biele, Public Art Collection

27.68 by 11.79 in.  
6.683 by 2.972 cm.

The Passion of Christ (Seizure)

no. 1146/1147



Biele, Public Art Collection

29.80 by 11.71 in.  
7.517 by 2.974 cm.

The Passion of Christ (Christ bearing the Cross)

(Part of outside of wings)

no. 1146/1147

# Galerie Weltkunst zu Berlin, K.- L. S.



15.53 by 6.48 in.  
6.48 by 6.48 in.

Berlin, Reich Collection in the National Gallery

Design for dagger sheath with scenes of death

Pen drawing  
1545/1546



15.53 by 6.48 in.  
6.48 by 6.48 in.

Berlin, Public Art Collection

Design for dagger sheath with mythological figures

Pen drawing  
1545/1546



Berlin, Public Art Collection

Anna Meyer

Drawing in black and colored chalk  
1545/1546

15.53 by 6.48 in.  
6.48 by 6.48 in.

39



# Galerie Weltkunst zu Berlin, K.- L. S.



Buck, Public Art Collection

Jakob Meyer zum Hagen  
Drawing in black and coloured chalk  
1511/1516

11.11 by 14.85 in.  
n. 184 by n. 476 cm.



Buck, Public Art Collection

Dorothea Meyer, nie Kammerjunker  
Drawing in black and coloured chalk  
1515/1516

11.11 by 11.10 in.  
n. 181 by n. 474 cm.

# Galerie Weltkunst zu Berlin, K.- L. S.



Brunswick, Duke Anton Ulrich Gallery

8.25 by 6.11 in.  
0.210 by 0.155 m.

Madonna in the Niche  
Pen and wash drawing (designs for glass-painting)  
1720



Rome, Public Art Collection

14.75 by 10.25 in.  
0.374 by 0.260 m.

Madonna with Dance  
(designs for glass-painting)  
Pen and wash drawing  
1720



Height 1.13 (left and right) 1.46 (center) Breadth 0.19 in.  
Height 0.108 (left and right) 0.182 (center) Breadth 0.640 in.

Height 12.5  
Height 4.5

Books, Public Art Collection

[illegible]

Christ appears to Mary Magdalene  
ca. 1118

Hampton Court Palace

# Galerie Weltkunst zu Berlin, K.- L. S.



Brunswick, Duke Anton-Ulrich Gallery

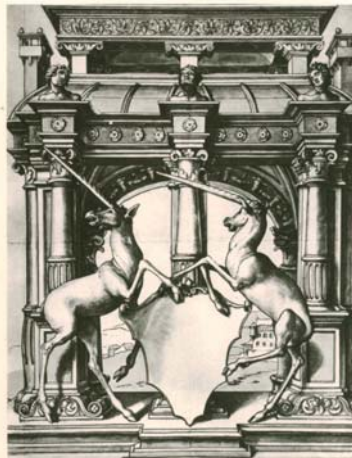
16.17 by 11.64 in.  
0.415 by 0.296 m.

Two Landknechte with the arms of the house of Fleckenstein

(designs for glass-painting)

Pen drawing

1517



Berlin, Public Art Collection

16.15 by 11.48 in.  
0.407 by 0.292 m.

Two Unicorns with empty caracern

(designs for glass-painting)

Pen and water-colour-drawing

1514/1515

# Galerie Weltkunst zu Berlin, K - I. S.



Pierre, Louvre

St. Adrian

65.40 by 5.48 cm,  
0.277 by 0.216 m.

(Design for glass printing)  
Pen and watercolor drawing  
ca. 1520

48



Woodcut prints, Royal Library

8.50 by 7.40 cm,  
0.260 by 0.230 m.

Henry Howard, Earl of Surrey

Drawing in black and colored chalk,  
between 1550 and 1560

Galerie Weltkunst zu Berlin, K.- L. S.



Bauk, Public Art Collection

The Prodigal Son

(design for glass painting)

Pen drawing

1919-1920

18.88 by 12.18 in.

8.113 by 5.408 in.

# Galerie Weltkunst zu Berlin, K.- L. S.



Rubens, Public Art Collection

The Passion of Christ (Christ bearing the Cross)

(design for glass painting)

Pen and brush drawing

1595/1596

17.54 by 12.40 in.  
9.415 by 5.135 in.

10



Rubens, Public Art Collection

The Passion (Peter washing his hands)

(design for glass painting)

Pen and brush drawing

1595/1596

17.54 by 12.40 in.  
9.415 by 5.135 in.

51



# Galerie Weltkunst zu Berlin, K.- L. S.



Biele, Public Art Collection

11.11 by 8.97 in.  
0.190 by 0.228 in.

St. Michael  
(design for glass-painting)  
Pen drawing, washed  
ca. 1811



Biele, Public Art Collection

14.84 by 12.14 in.  
0.577 by 0.488 in.

St. Elizabeth of Hungary  
(design for glass-painting)  
Pen drawing  
1811



# Galerie Weltkunst zu Berlin, K.- L. S.



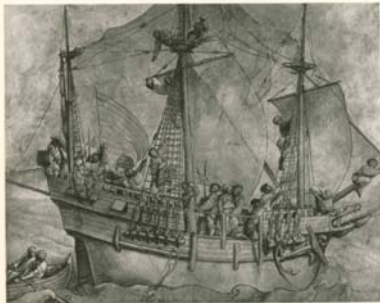
Berlin, Peter Room

1677 by 13.12 in.  
16.47 by 10.84 in.

Pennance

Pen and wash drawing, tinted with water-colours

1711



Frankfurt a. M., Stadt Art Institute

15.40 by 10.40 in.  
16.14 by 10.18 in.

Sailing Ship

Pen drawing, tinted with water-colours

16. 1711

# Galerie Weltkunst zu Berlin, K.- L. S.

John Poynter



Windsor Castle, Royal Library

11.6 x 17.3 in.  
0.495 by 0.435 m.

John Poynter

Drawing in black and colored chalk  
Between 1512 and 1543

16

Harry Guldeford Knight



Windsor Castle, Royal Library

12.1 x 11.6 in.  
0.305 by 0.295 m.

Sir Henry Guldeford

Drawing in black and red-wood chalk  
1507

17

# Galerie Weltkunst zu Berlin, K.- L. S.



Buck, Public Art Collection

Duke of Berry

Drawing in black and red-inked chalk

1146.1121

1146 by 1146 in.  
1147 by 1147 in.

18



Buck, Public Art Collection

Duke of Berry

Drawing in black and red-inked chalk

1146.1121

1146 by 1146 in.  
1147 by 1147 in.

19

# Galerie Weltkunst zu Berlin, K.- L. S.



Berlin, Print Room

Standard bearer from the Livenschal  
(design for glass painting)

15.81 by 14.11 in.  
0.428 by 0.558 m.

Pen drawing, tinted with water-colours  
1119-1120

60



Bombay, Public Art Collection

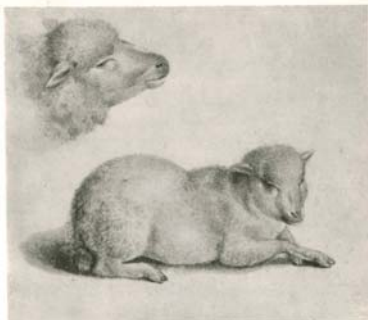
Wife of Hindu merchant  
(costume study)

11.43 by 7.81 in.  
0.291 by 0.199 m.

Pen drawing, washed  
Between 1716 and 1720

61

# Galerie Weltkunst zu Berlin, K.- L. S.



Rede, Public Art Collection

8.14 by 9.88 in.  
0.207 by 0.248 m.

Lamb and head of a lamb  
Drawing, tinted with watercolours  
ca. 1120

62



London, British Museum

Diameter 8.81 in.  
Diameter 0.224 m.

A Mine  
Pen drawing  
Between 1310 and 1340

63

# Galerie Weltkunst zu Berlin, K.-L. S.



Bath, Public Art Collection

1.44 by 1.97 in.  
copy by 0.101 m.

Time brings Truth to light

Pen drawing  
1115/1141



New York, Holo Collection Diameter 2.08 in.  
Diameter 0.101 m.

Tanish

Pen drawing, with water-colour tints, heightened  
with gold  
1115/1141



London, British Museum

Diameter 1.91 in.  
Diameter 0.101 m.

Time brings Truth to light

Pen drawing  
1115/1141



Wotton Park, Earl of Bradford

Anne Boleyn  
Drawing in black and coloured chalk.  
1115

1.44 by 1.97 in.  
copy by 0.101 m.

# Galerie Weltkunst zu Berlin, K.- L. S.



Stifterbild nach Leonardo  
da Vinci, La Bella.  
Anbetung des Künstlers  
Karl-Ludwig Sauer am  
25. Februar 2013, in  
Csurgó, Ungarn.



Biele, Public Art Collection

Each by 5.19.10.  
0.18m by 0.137.10.

Lactia before the Judges  
Design for the Fagade of the Heremstein House in Lactia  
Pen drawing, washed  
1177-1118

Galerie Weltkunst zu Berlin, K.-L. S.



Facade of the Hermenouin House in Lorient

Helmreich, Alfred Schenckel



Pen drawing  
Between 1938 and 1940

Books, Public Collections

[illegible]



# Galerie Weltkunst zu Berlin, K.- L. S.



Rude, Public Art Collection

11.18 by 10.11 in.  
0.284 by 0.257 m.

King Sapor beseeches the Emperor Valerian  
Design for the Great Council Chamber in Bude  
Pencil drawing, tinted with water-colours

1931



Rude, Public Art Collection

19.61 by 19.48 in.  
0.498 by 0.497 m.

The Sassanid Ambassador before Carus Domitian  
Fragment of a wall-painting from the Great Council Chamber in Bude

1931 1932

# Galerie Weltkunst zu Berlin, K.- L. S.



Biele, Public Art Collection

Small figures of  
Washed pen drawing, tinted with watercolor  
114 114

Washed pen drawing  
114 114



Biele, Public Art Collection

King Richard's chamber in the  
Design for the Great Council Chamber in Biele, washed pen drawing (tinted with watercolor)  
114 114

Washed pen drawing  
114 114

# Galerie Weltkunst zu Berlin, K.-L. S.



Berlin, Public Art Collection

6.64 by 9.79 in.  
6.189 by 8.197 in.

Design for Façade of House "Zum Käsemarkt" in Biele  
Drawing in black chalk, pen and wash

1513



Berlin, Print Room

10.48 by 11.54 in.  
10.175 by 11.118 in.

Design for the "House of the Thane" in Biele  
Old copy after design of

1515/1518

# Galerie Weltkunst zu Berlin, K.-L. S.



Book, Public Art Collection

Exterior of the "House of the Queen" in Berlin.  
Reconstruction by H. J. Bode.



Book, Public Art Collection

Thomas Mann and his family.  
First drawing  
1907

1907 by sketch of  
1907 by sketch of

# Galerie Weltkunst zu Berlin, K.- L. S.

The Lady Barkley



Windsor Castle, Royal Library

Elizabeth Dancy

Drawing in black and coloured chalk  
1548/1549

14.48 by 10.21 in.  
36.8 cm by 26.0 cm

76

Mother Lark



Windsor Castle, Royal Library

Margaret Gipe

Drawing in coloured and black chalk  
1548/1549

15.07 by 11.48 in.  
38.3 cm by 29.4 cm

77

# Galerie Weltkunst zu Berlin, K.- L. S.



Windsor Castle, Royal Library

Thomas More

Drawing in black and coloured chalk  
1546-1547

15.54 by 11.27 cm.  
in gips by 10.99 cm.



New York, Fisk Collection

18.47 by 11.43 cm.  
15.74 by 10.99 cm.

Thomas More

1547

# Galerie Weltkunst zu Berlin, K.- L. S.



Windsor Castle, Royal Library

John More (son of Thomas More)  
Drawing in black and red ink on chaff  
1546-1547

14.96 by 11.22 in.  
6.18 by 4.49 in.

80



Windsor Castle, Royal Library

Cecily Horton  
Drawing in black and red ink on chaff  
1546-1547

14.96 by 11.22 in.  
6.18 by 4.49 in.



# Galerie Weltkunst zu Berlin, K.- L. S.



Jan Baars, Tempora

1977



Wendert Galle

23.24 by 17.11 in.  
59.99 by 43.47 cm.

Dierich Boms

1911

11

# Galerie Weltkunst zu Berlin, K.- L. S.



Paris, Louvre

11.45 by 16.25 in.  
29.32 by 41.27 cm.

Niklaus Koster  
1148



Chicago, Innes Collection

11.54 by 16.48 in.  
29.30 by 41.90 cm.

Hermann III Wadigh  
1154

# Galerie Weltkunst zu Berlin, K.- L. S.



Brunswick, Duke Anton-Ulrich-Gallery

25.66 by 17.71 in.  
acquired by 18.450 in.

Cyriacus Kale

1511

34



Vann, Kunsthistorisches Hofmuseum

25.39 by 18.45 in.  
acquired by 18.450 in.

Dr. John Chambers

1545/1549

35

# Galerie Weltkunst zu Berlin, K.- L. S.



Chesworth, Duke of Devonshire 105.47 by 15.48 in.  
8.68 by 1.520 m.

Henry VIII and his Father Henry VII  
Caricature of wall-painting in the Palace of Whitehall, London  
1535



Rome, National Gallery

14.75 by 20.15 in.  
37.86 by 51.30 cm.

Henry VIII  
1539/1540

# Galerie Weltkunst zu Berlin, K.- L. S.



Albroy, Earl Spencer

55 cm by 7.48 cm.  
n. 1810 by 18.190 cm.

Henry VIII  
1537

88



Vienne, Kunsthistorisches Museum

55 cm by 7.48 cm.  
n. 1810 by 18.190 cm.

Jane Seymour  
1537

89

# Galerie Weltkunst zu Berlin, K.- L. S.

After original given to Pope Sixtus IV., Rome



Paris, Louvre

25.48 by 19.29 in.  
64.6 by 49.0 cm.

Anne of Cleves  
1119



London, National Gallery

20.47 by 15.89 in.  
52.0 by 40.3 cm.

Christina of Denmark  
1118

# Galerie Weltkunst zu Berlin, K.-L. S.



Canada, Daum Collection

Katherine Howard  
1540/1541

48.47 by 39.66 in.  
1.246 by 1.008 m.

92



New York, Mellon Collection

Edward, Prince of Wales  
1518/1519

41.81 by 36.42 in.  
1.061 by 0.927 m.

93



# Galerie Weltkunst zu Berlin, K.-L. S.



Buck, Public Art Collection

Edward, Prince of Wales

17.58 by 11.16 in.  
8.43 by 4.39 cm.

Drawing in black and coloured chalk, touched in with pen and wash, and tinted with water-colours

1545/1547

94



Windsor Castle, Royal Library

Lady Parker

11.45 by 8.46 in.  
8.43 by 4.39 cm.

Drawing in black and coloured chalk, rose-tinted paper

Between 1532 and 1545

95

# Galerie Weltkunst zu Berlin, K - L. S.

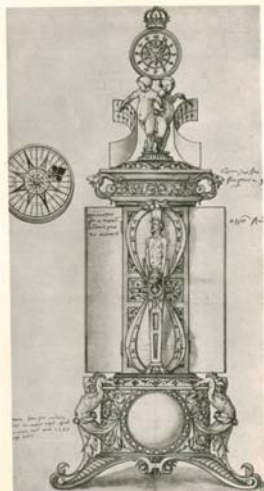


Oxford, Ashmolean Museum  
1478. by 6.11 in.  
0.171 by 0.111 m.

Design for Ornamental Cup for Jane Seymour  
Pen drawing, tinted with water colours.

96

1510-1517



London, British Museum

14.11 by 8.11 in.  
0.411 by 0.211 m.

Design for an Ornamental Clock

Pen drawing

1541

97

# Galerie Weltkunst zu Berlin, K - L. S.



Buch, Public Art Collection

Design for the Hilt of a Diamond Digger

Wahad post drawing

11.05.1142

7.79 by 5.94 in.  
0.198 by 0.151 in.

98



9.98 by 14.42 in.  
0.411 by 0.577 in.

Temple of Hades  
Design for a wall painting in the temple of Hades  
Post drawing in Indian ink, blue washed over  
11.05.1142

Penn, Lovers

99

# Galerie Weltkunst zu Berlin, K - L. S.



Flommo, Eiffel Gallery

190

Sir Richard Southwell

1196

16.25 by 14.17 in.  
41.27 by 35.94 cm.



Frankfurt a. M., Stadel Art Institute

Diameter 11.25 in.  
Diameter 28.94 cm.

Simon George of Quentow

ca. 1548

101

# Galerie Weltkunst zu Berlin, K - L. S.



Dischendorf, Picture Gallery

15.75 by 24.99 in.  
0.410 by 0.630 m.

Thomas Gualther and his son John  
1518

102



Hempden Court Palace

18.22 by 15.10 in.  
0.463 by 0.381 m.

John Baskinower of Marbury  
Between 1518 and 1517

103

# Galerie Weltkunst zu Berlin, K - L. S.



Windsor Castle

12.14 by 21.48 in.  
16.74 by 14.86 in.

Sir Henry Cockfield  
1527

104



New York, Metropolitan Museum

12.48 by 18.18 in.  
16.74 by 14.86 in.

Lady Mary Guildford  
(old copy)  
Original P. and D. Colnaghi, London  
1747

105

# Galerie Weltkunst zu Berlin, K - L S



Basil, Public Art Collection

Lady Mary Goldford

45.25 by 31.12 in.  
114.9 by 79.5 cm

Sketch for portrait of 1587

(Drawing in black and colored chalk)

1587

106



Basil, Public Art Collection

Sir Nicholas Caux

45.44 by 31.12 in.  
115.5 by 79.5 cm

(Drawing in black and colored chalk)

1587-1588

107



# Galerie Weltkunst zu Berlin, K - L. S.



Hague, Royal Museum

25.22 by 34.86 in.  
64.29 by 88.41 cm.

Robert Cheeseman  
1512

108



Hague, Royal Museum

25.22 by 34.86 in.  
64.29 by 88.41 cm.

Noble with Falcon  
1512

109

# Galerie Weltkunst zu Berlin, K - L. S.



London, Lambeth Palace

29.66 by 21.70 in.  
n.764 by n.613 cm

Archbishop William Warham

1517

110



Windsor Castle

25.00 by 22.00 in.  
n.634 by n.559 cm

Thomas Howard, Duke of Norfolk

1518/1519

111

# Galerie Weltkunst zu Berlin, K - L. S.

The Warden, Earl of Southampton.



Windsor Castle

Flowerdew, Earl of Southampton  
Drawing in black and coloured chalk  
ca. 1545

14.64 by 10.43 in.  
6.175 by 4.165 m.

112

Nicholas Borbonius Poeta.



Windsor Castle, Royal Library

Nicholas Borbonius  
Drawing in black and coloured chalk  
1555

13.00 by 10.11 in.  
6.350 by 4.057 m.

113

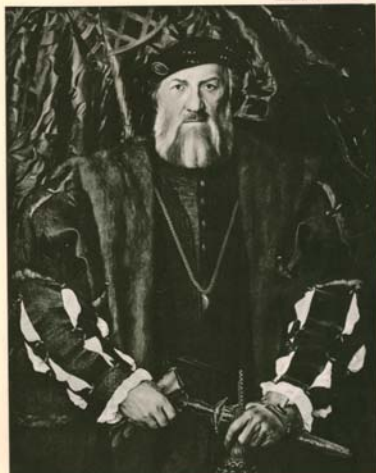
# Galerie Weltkunst zu Berlin, K - L. S.



London, National Gallery

81.50 by 64.63 in.  
2080 by 1650 mm

The Ambassadors  
1480



Oxford, Picture Gallery

36.41 by 49.63 in.  
925 by 1254 mm

Charles de Solles, Sieur de Montreuil  
1480/1485

115

# Galerie Weltkunst zu Berlin, K - L S



Berlin, Deutsches Museum

20.77 by 14.78 cm  
0.818 by 0.579 in.

Duke Anton the Good of Lorraine  
Between 1515 and 1545

116



Berlin, Dr. R. Georg-Schlandberger

14.64 by 11.46 in  
0.578 by 0.454 in

Portrait of the Artist (1)  
Drawing in black and colored chalk, painted over with water-color  
1518/1920

117

# Galerie Weltkunst zu Berlin, K - L. S.



Friedrich- Napoleon-Alexander  
auf der Schoßbrücke zu Berlin



Bust, Dr. B. Gölpe-Schlachtenberg

14.44 by 11.44 in.  
0.172 by 0.174 m.

Portrait of the Artist (2)

Drawing in black and colored chalk, painted over with water-color  
1498/1499